

► Overview

More of a locals crag, the **X Cave** may appeal to those who enjoy steep, slightly chossy, obscure crags. That being said, the climbing is unique and enjoyable with some bizarre sequences and powerful moves. Standouts include **Crash Test Dummies** (12d), **Tastes Like Chicken** (13a), and **Artifact** (13d).

► Season

Fall, winter, and spring are best. The cliff gets only a bit of sun in the morning and due to the steep nature, shade is the norm. Expect temperatures similar to the weather report for Apex, Nevada.

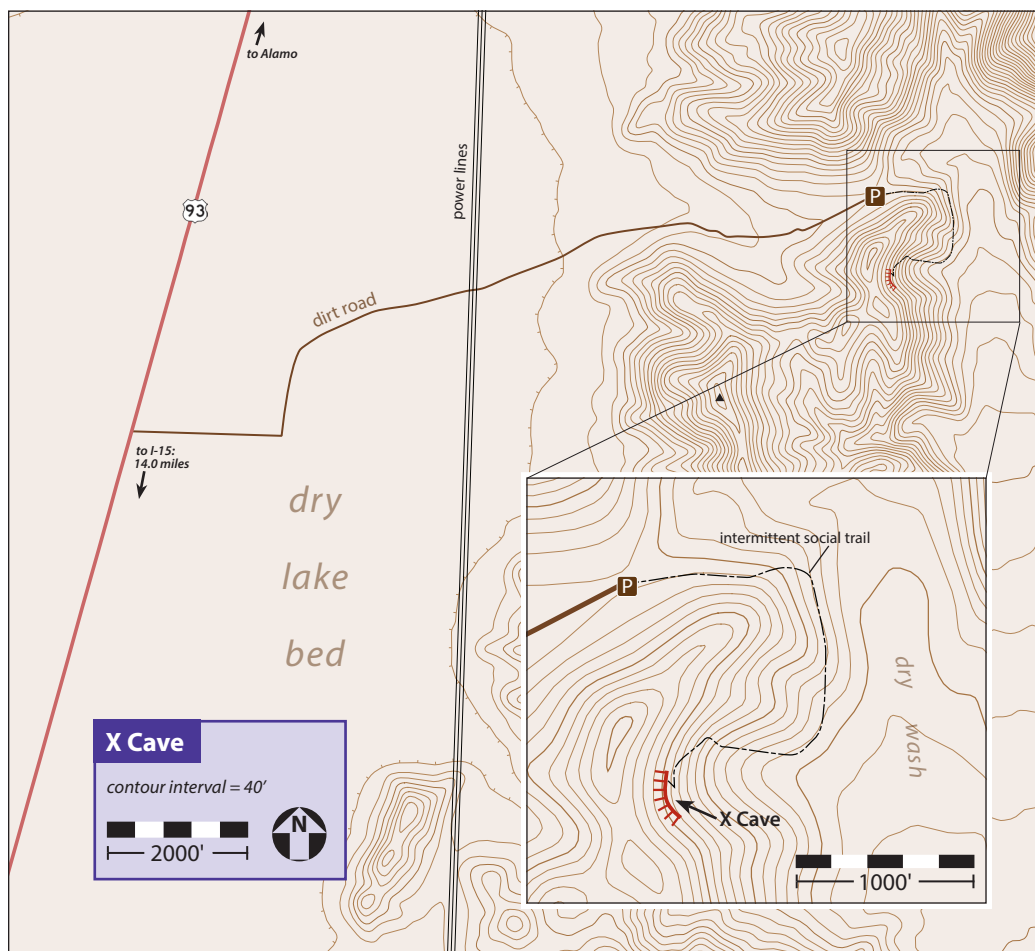


Restrictions

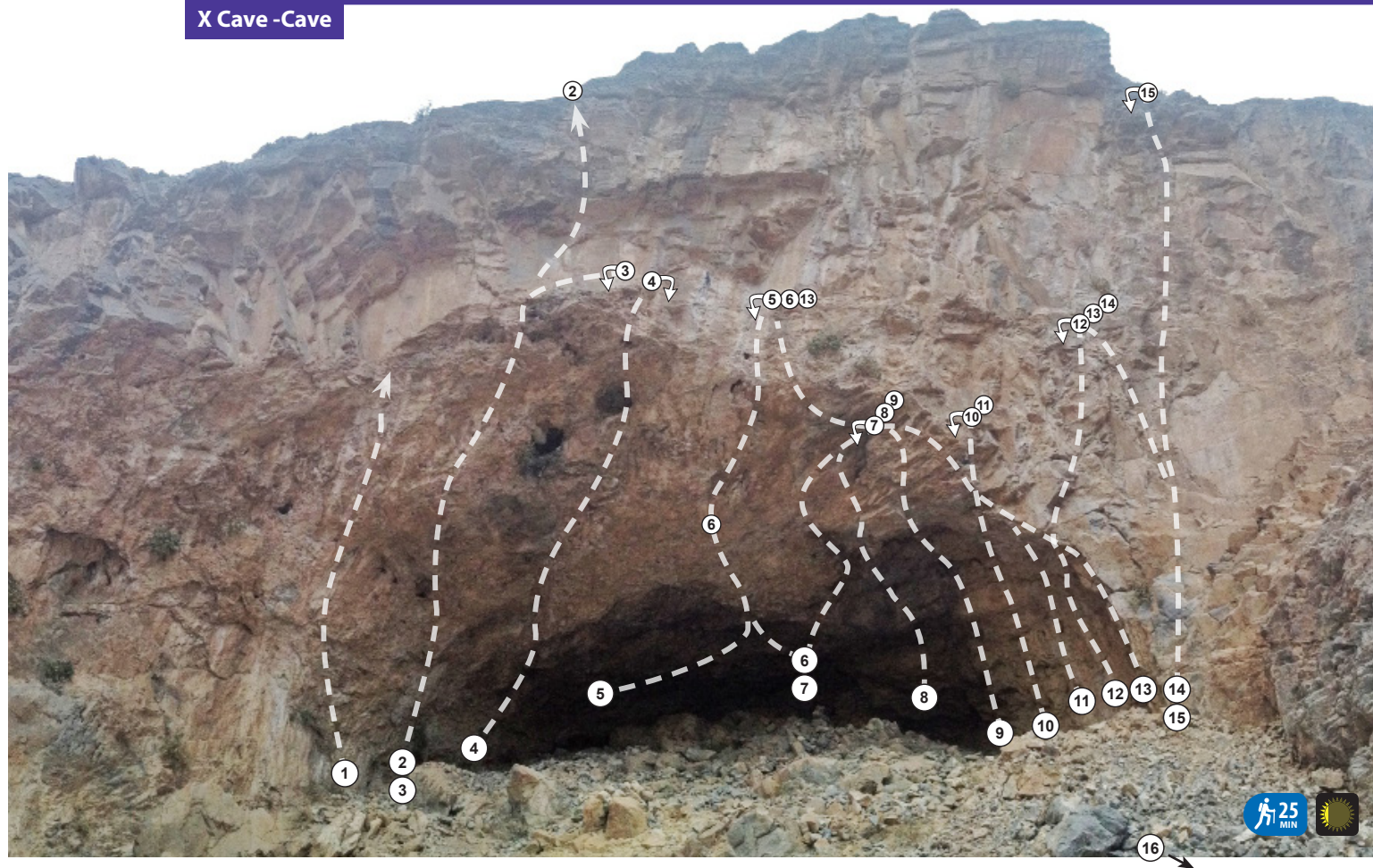
The cliff lies within land managed by the Bureau of Land Management. There have been no access issues.

► Directions

From Las Vegas, head north on I-15. Take exit 64 for US-93. Follow US-93 for 14.0 miles and turnoff at a dirt road (36.549379°, -114.932612°). Follow this road east and north for 2.2 miles, crossing straight at the power line access road at 1.1 miles, to a small parking area adjacent to a water collector (36.558521°, -114.897585°). From the parking, walk east, skirting around the hillside on an intermittent social trail, which is occasionally marked with cairns. The trail generally loses elevation slightly until the cave (36.555153°, -114.896893°) is visible up a rocky gully. Follow slabs on the right side of the gully to a social trail at the base of the craggy right wall. Total distance is 0.6 miles.



X Cave -Cave



36.555153°, -114.896893° 2743'

X Cave - Cave

① *undone*

Half prepared.

② *undone*

?bs to 7-bolt anchor

The logical extension to **Tastes Like Chicken** has not been climbed.

③ **Tastes Like Chicken ★★ 5.13a**

Mike Leavitt

9bs to 2-bolt wire-rope anchor

Powerful climbing on pockets through a nice, steep shield of less-chossy rock on the left side of the cave. Move right at the lip to clip an anchor in the small face about 20' below the rim.

④ **Crash Test Dummy ★★ 5.12d**

12bs to 2-bolt chain lower off

The must-do **X Cave** classic. Continuous steep thuggery with some tricky sequences through the left side of the cave.

⑤ **left start *undone***

bs to 2-bolt anchor

The left start, climbing 10' to 15' above the ground into **Artifact** has not been climbed.

⑥ **Artifact ★★ 5.13d**

Jason Campbell. Fall 2002

14bs to 2-bolt wire-rope anchor

The main line out the center of the cave. Athletic power endurance.

⑦ **The Disorientator ★ 5.13b**

9bs to 2-bolt chain lower off

A short, powerful route begins from the tall, cheater-stone stack at the back of the cave. Less-than-perfect rock quality. Shouldery.

⑧ **Superman's Revenge? 5.13c?**

10bs to 2-bolt chain lower off

Climb the left side of the steep grayish rock, finishing on **The Disorientator**.

⑨ **One Eyed Willie 5.13a**

Charlie Barrett. Fall 2002

6bs to 2-bolt chain lower off

Climb the right side of the grayish steep rock with some entertaining feet-first maneuvers to an undercling crux. A worthwhile 11c/d to the 5th bolt.

⑩ **Hideous Taco ★ 5.12c**

7bs to 2-bolt lower off

Climb the left side of the creamy steepness with shouldery gastons and underclings. Good rock quality.

⑪ **Between the Tacos ★ 5.12?**

bs to 2-bolt anchor

Climb through the creamy steepness passing four bolts then join **Hideous Taco**.

⑫ **Pink Taco ★ 5.12a**

6bs to 2-bolt wire-rope anchor

Start rightmost in the small alcove with fairly good whitish rock. A difficult lip encounter leads to easier climbing but less-solid rock.

⑬ **Reading Rainbow ★ 5.13c**

Tom Moulin. January 2017

11bs to 2-bolt wire-rope anchor

Start at the right edge of the cave and follow its lip up and left to the anchor of **Artifact**. An odd link-up that includes some nice rock climbing and two powerful, sequential cruxes.

⑭ **The Warm Up 5.10d**

5bs to 2-bolt wire-rope anchor

Start on the chunky, vertical face on the right side of the cave. Move up then left after the 4th bolt to the anchor. Awkward, disjointed climbing.

⑮ **Fighting Falcons ★★ 5.12c**

Tom Moulin. Winter 2012

9bs to 2-bolt anchor

Start as for **The Warm Up**, continue straight through the overhanging face with some thoughtful sequences and often less-than positive holds.

X Cave - Right Face

Right of the main cave is a nice, clean, low-angle face of gray rock with a seemingly random spattering of bolts. The following route climbs the center of the bolts, just left of two bolts missing hangers.

⑯ ★ 5.10a

6bs to 2-bolt anchor

Climb the gray slab with a whitish streak at about 20'. Pleasant movement on generally solid but sharp rock.